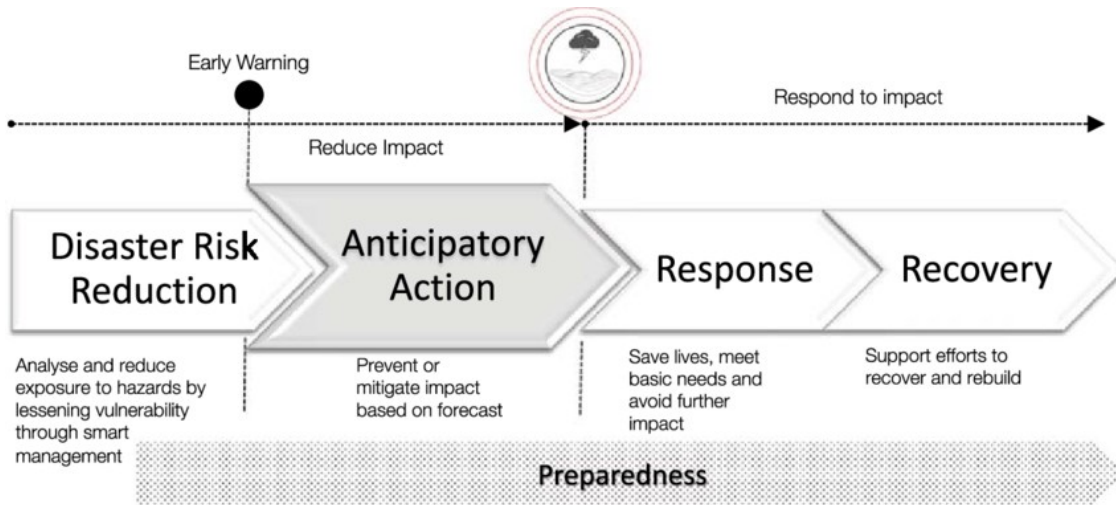
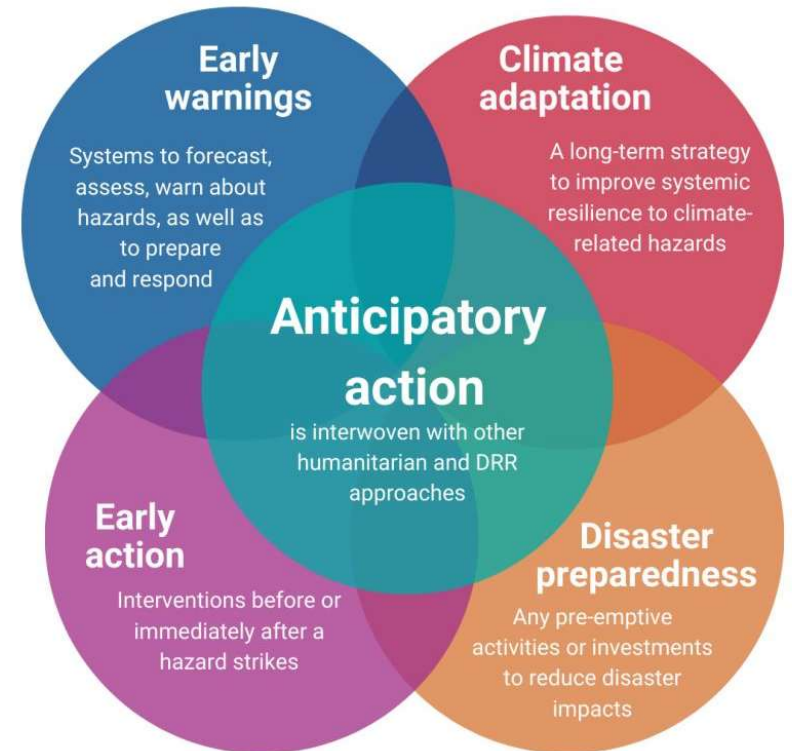
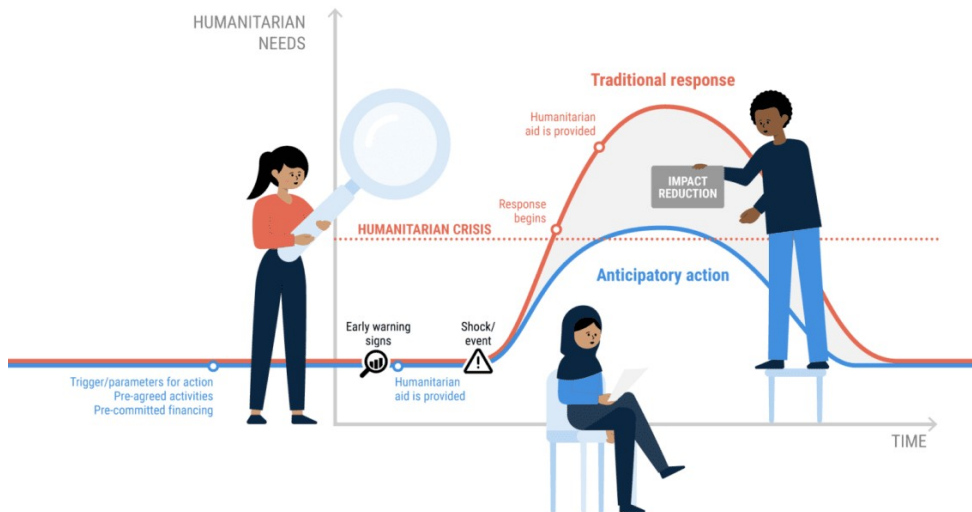


# **From Inception to Impact**

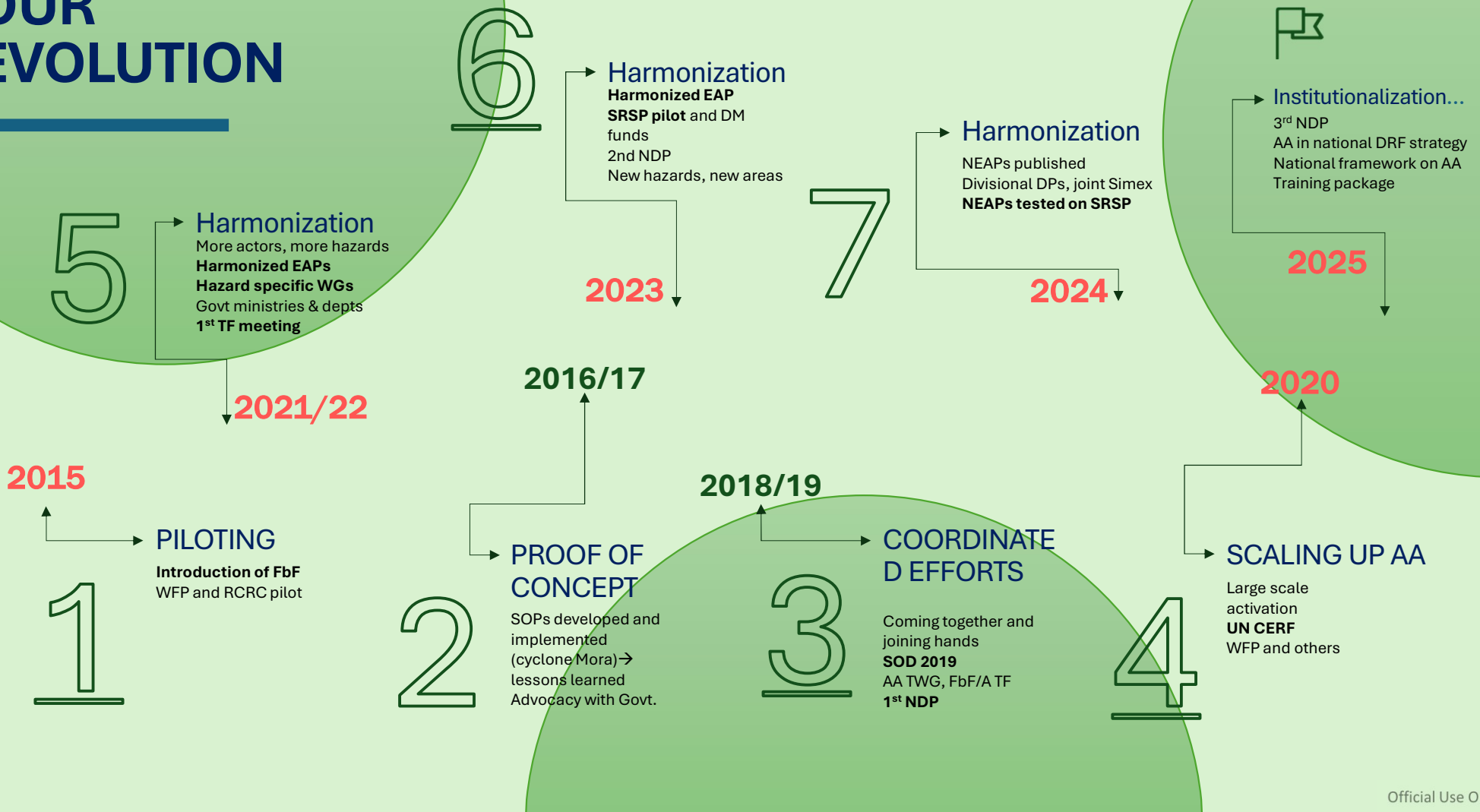
**10 years of Anticipatory  
Action in Bangladesh**



**Anticipatory action** connects early warnings, early actions, adaptation and disaster preparedness



# OUR EVOLUTION

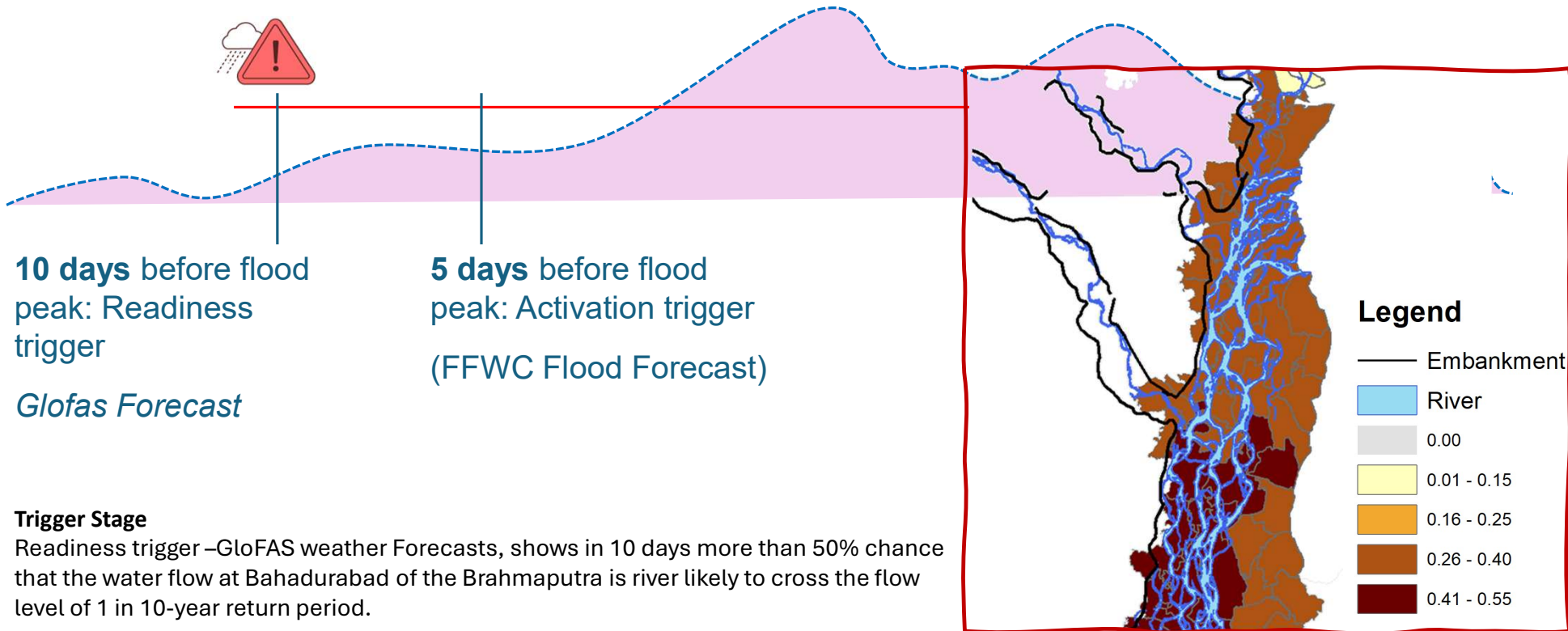


# WFP's Landmark Flood AA Bangladesh

- Jamuna River Floods (July 2024) was the largest AA activation, with 478,140 people reached and 1.5 million receiving early warning messages.
- WFP collaborates closely with MoDMR, MoWCA, BMD, FFWC.
- AA is under the CERF Framework led by UNRCO with WFP, UNICEF, FAO, UNFPA, and BDRCS.
- Pre-registration of 500,000 households allows for a rapid delivery of cash via bKash.



# Flood Trigger

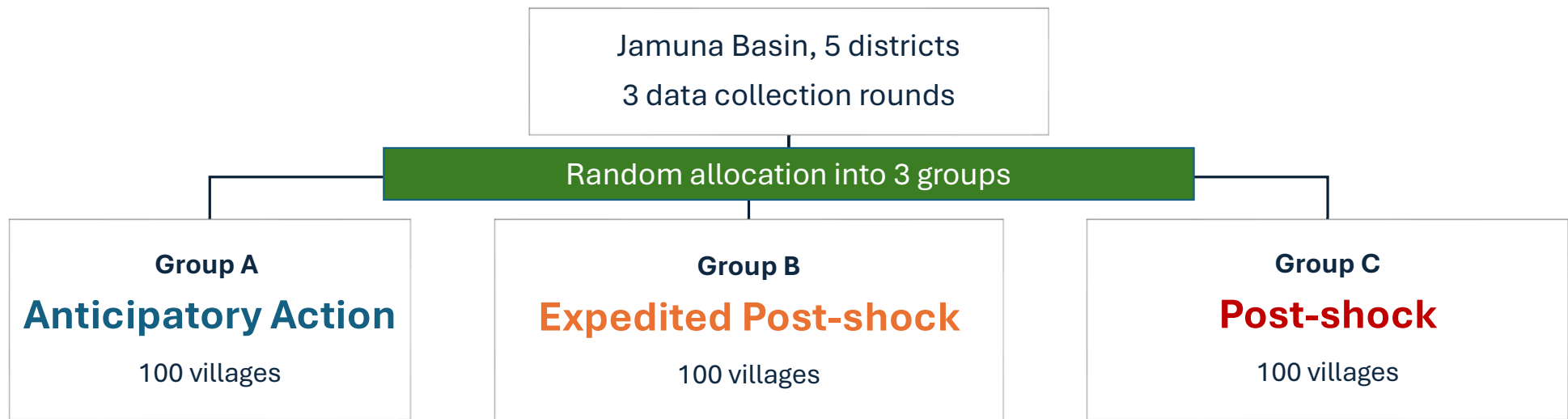


## Trigger Stage

Readiness trigger –GloFAS weather Forecasts, shows in 10 days more than 50% chance that the water flow at Bahadurabad of the Brahmaputra is river likely to cross the flow level of 1 in 10-year return period.

Activation Trigger-FFWCs deterministic 1-5 days forecast shows that the water level will cross DL + 0.85 meter at Bahadurabad

# Design



# Impact Evaluation

- The anticipatory action group (2,250 households) received Tk 5,000 (US\$43) of cash transfers two days before the flood.
- • A rapid post-shock group (2,250 households) received the same amount in August 2024 (approximately three weeks after the flood peak), and
- • A standard post-shock group (2,250 households) also received Tk 5,000 (US\$43) transfers (approximately eight weeks after the flood peak).

# Result

- Anticipatory action delivered clear benefits by helping households meet their needs earlier and more effectively.
- AA households experienced improved food security, mental health, and reduced reliance on negative coping strategies during the critical early weeks of the flood.
- These early advantages lasted for up to 8 weeks to 3 months, depending on the outcome.
- This demonstrates that providing the same amount of assistance as early as possible before a flood has significant short- and medium-term impacts on well-being.

# WAY FORWARD

AA framework and  
roadmap

Cascade AA discussions  
and capacities at lower  
admin levels- through  
regional DP and  
trainings.

Strong policy presence-  
supported by policy  
briefs and evidence

Further integration,  
institutionalization and  
mainstreaming AA in  
DRM

Strong Bangladesh  
representation in the  
regional and global  
dialogue.

Strong coordination and  
collaboration through  
well-resourced and  
empowered TWG and  
Task Force.